

NOZZLE HEATERS



HIGH QUALITY
+ **LOW** PRICES
= **BEST** VALUE

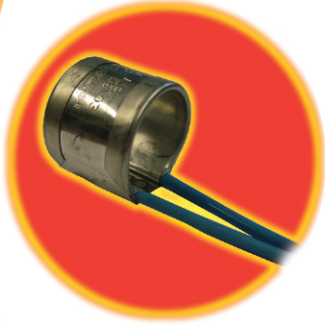
THERMELEC

Industrial Heaters, Temperature Controls and Sensors Specialists

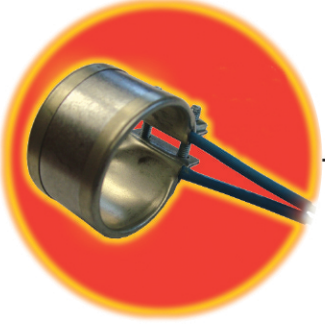
Old Naas Road • Bluebell • Dublin 12 • Phone (01) 4568111 • Fax: (01) 4568108
E-mail: sales@thermelec.ie • Web: www.thermelec.ie



- Very Low Cost
- Lead Exit Between Clamp Edges
- 600mm Glass Fibre Leads Standard
- Quantity Discounts Available



- Compact Push Fit Style
- Leads Exiting From Thickness of Heater
- 600mm Glass Fibre Leads Standard
- Quantity Discounts Available



- Very Low Cost
- Leads Exiting From Thickness of Heater
- 1000mm Glass Fibre Leads Standard
- Quantity Discounts Available



- Low Profile Style
- Leads Exiting From Thickness of Heater
- 600mm Glass Fibre Leads Standard
- Quantity Discounts Available



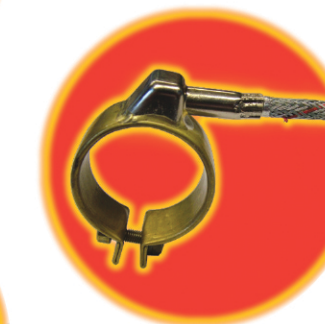
- Competitively Priced
- Leads Exit Opposite Clamps
- 300mm Metal Braided Leads Standard
- Quantity Discounts Available



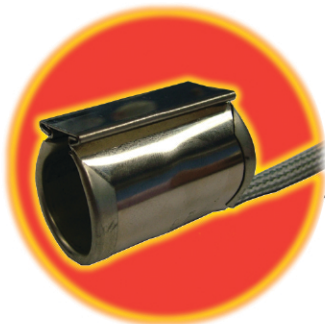
- 45° Lead Exit From Brazed Tube
- 300mm Metal Braided Leads Standard
- Quantity Discounts Available



- Fully Sealed Heater
- Longer Life - Resists Contamination
- 500mm Metal Braided Leads Standard
- Quantity Discounts Available



- Fully Sealed Heater
- Longer Life - Resists Contamination
- 300mm Metal Braided Leads Standard
- Leads Exit From 35° Brazed Tube, In Any Direction



- Wedge Lock Style
- Very Compact
- 500mm Fibre Glass Tube Leads Standard
- Quantity Discounts Available